

motor connection

cable	brush	cylindrical	connection
-X31	brush	brush	at motor -M3/A
-X32	right	right	brush plug top/bottom
-X33	right	right	connection T
-X34	right	right	brush plug bottom
-X35	right	right	connection P

99-1036-50  
option  
spray test

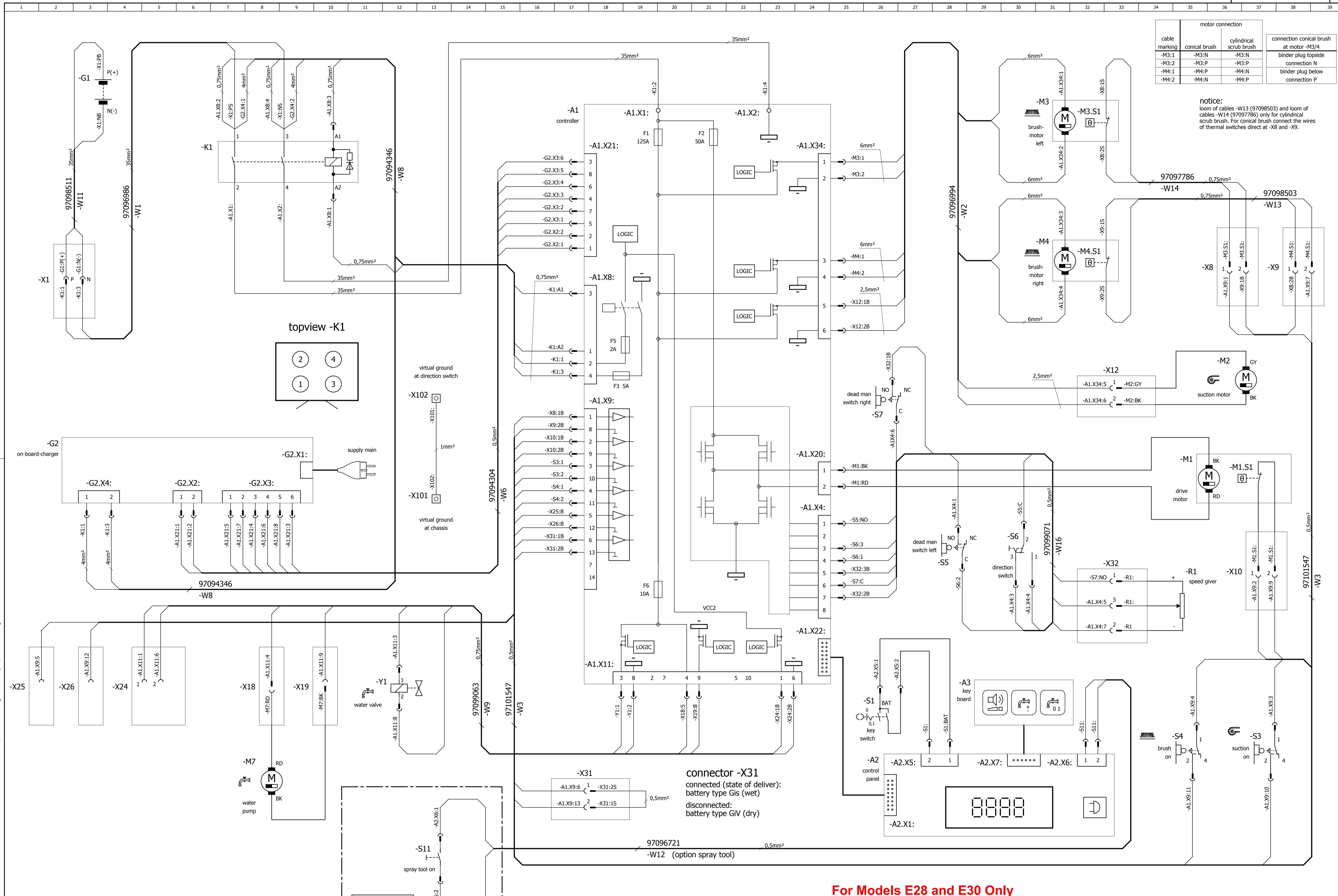
**For Models E28 and E30 Only**

PROT.DATUM: 15.06.2007 B-Stanz - 001 / R. / 01.06.07 003 / Lager / 14.06.07

0	8	0880-12	01.06.07	RL	2003	Drum	name	VLS-Dr. 1	Benennung	connection scheme	E2833		Zählungs-Nr.	91026575
+									NO 080 Zeichnungshistorie ist auf der Seite Rechts von Blatt 001 zu			1/20.06.07/10	Blattnr. 2	Blatt 1

ref.	designation	path	ref.	designation	path
-A1	controller E24 / E26	/1.20			
-A2	control panel	/1.30			
-A3	key board	/1.33			
-G1	battery	/1.2			
-G2	on-board-charger	/1.6			
-K1	main contactor	/1.16			
-M1	drive motor	/1.27			
-M1.51	thermal switch drive motor	/1.28			
-M2	suction motor	/1.28			
-M3	conical brush motor left	/1.27			
or	cylindrical brush motor left				
-M3.51	thermal switch brush motor left	/1.28			
-M4	conical brush motor right	/1.27			
or	cylindrical brush motor right				
-M4.51	thermal switch brush motor right	/1.28			
-M7	water pump	/1.20			
-R1	speed giver	/1.29			
-S1	key switch	/1.31			
-S3	suction on	/1.8			
-S4	brush on	/1.11			
-S5	dead man switch left	/1.32			
-S6	direction switch	/1.32			
-S7	dead man switch right	/1.28			
-S11	spray tool on (OPTION spray tool)	/1.36			
-Y1	water valve	/1.18			

**For Models E28 and E30 Only**



motor connection			
cable marking	conical brush	cylindrical scrub brush	connection conical brush at motor -M3/4
-M3:1	-M3:N	-M3:N	binder plug topside
-M3:2	-M3:P	-M3:P	connection N
-M4:1	-M4:P	-M4:N	binder plug below
-M4:2	-M4:N	-M4:P	connection P

notice:  
loom of cables -W13 (97098503) and loom of cables -W14 (97097786) only for cylindrical scrub brush. For conical brush connect the wires of thermal switches direct at -X8 and -X9.

connector -X31  
connected (state of deliver):  
battery type GiS (wet)  
disconnected:  
battery type GiV (dry)

**For Models E28 and E30 Only**

=	2	J.	1174-00	19.12.07	Ri.	2007	Datum	Name	VES-Nr. :	Benennung							
	Nr.	Zahl kommt vor	Änd.-Nr.	Datum	Name	Normgepr.	Gezeichnet	07.06.	kupe	Ersatz für : Gi.Nr.							
+	Für diese Zeichnung behalten wir uns alle Rechte vor. (Gemäß DIN 34)																
	<table border="0"> <tr> <td>Änd. Nr. :</td> <td>1066-00</td> <td colspan="2">Typ: 7062-12/15/18</td> <td colspan="2">Blattzahl: 3</td> <td colspan="2">Blatt: 1</td> </tr> </table>										Änd. Nr. :	1066-00	Typ: 7062-12/15/18		Blattzahl: 3		Blatt: 1
Änd. Nr. :	1066-00	Typ: 7062-12/15/18		Blattzahl: 3		Blatt: 1											

PLOTDATUM : 19.12.2007 B-Stand : 003 / Ri. / 19.12.07 [004 / kupe / 19.12.07]

date of plot: 19.12.2007

003 / Ri. / 19.12.07 [ 004 / kupe / 19.12.07 ]

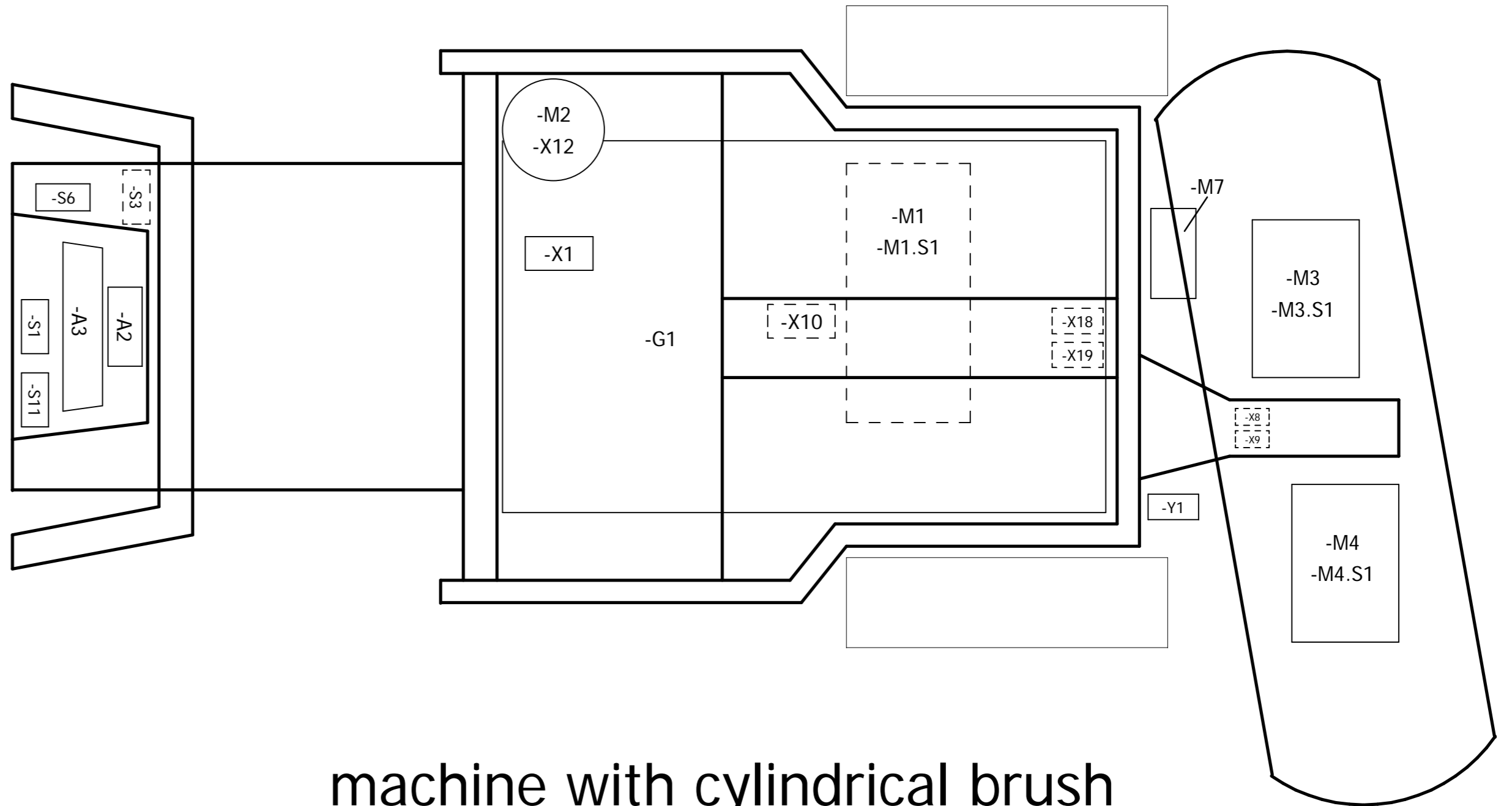
91026567

ref.	designation	part no	path	ref.	designation	part no	path
-A1 ②	controller	90541483	/1.20	-X1	battery connector 160A		/1.2
-A2	control panel	90487216	/1.26	-X8	connector 2 poles		/1.36
-A3	key board	90487232	/1.29	-X9	connector 2 poles		/1.38
-G1	battery		/1.3	-X10	connector 2 poles		/1.37
-G2	on-board-charger	97097679	/1.3	-X12	connector 2 poles		/1.33
-K1	main contactor	90529942	/1.9	-X18	connector 1 poles		/1.8
-M1	drive motor	90526021	/1.36	-X19	connector 1 poles		/1.9
-M1.S1	thermal switch drive motor	to -M1	/1.37	-X24	connector 3 poles		/1.4
-M2	suction motor	97096200	/1.37	-X25	connector 1 poles		/1.1
-M3	conical brush motor left 750	90507476	/1.31	-X26	connector 1 poles		/1.3
or	conical brush motor left 850	90507484		-X31	connector 2 poles		/1.18
or	cylindrical brush motor left 700	90417056		-X32	connector 3 poles		/1.33
-M3.S1	thermal switch brush motor left	to -M3	/1.33	-X101	connection virtual ground at chassis		/1.13
-M4	conical brush motor right 750	90507476	/1.31	-X102	connection virtual ground at direction switch		/1.13
or	conical brush motor right 850	90507484		-Y1	water valve	90435595	/1.12
or	cylindrical brush motor right 700	90417056					
-M4.S1	thermal switch brush motor right	to -M4	/1.33				
-M7	water pump	97047310	/1.8				
-R1	speed giver	97100416	/1.34				
-S1	key switch	90323437	/1.26				
-S3	suction on	90306002	/1.37				
-S4	brush on	90306002	/1.35				
-S5	dead man switch left	90520446	/1.28				
-S6	direction switch	90516147	/1.30				
-S7	dead man switch right	90520446	/1.26				
-S11	spray tool on (OPTION spray tool)	90224650	/1.13				

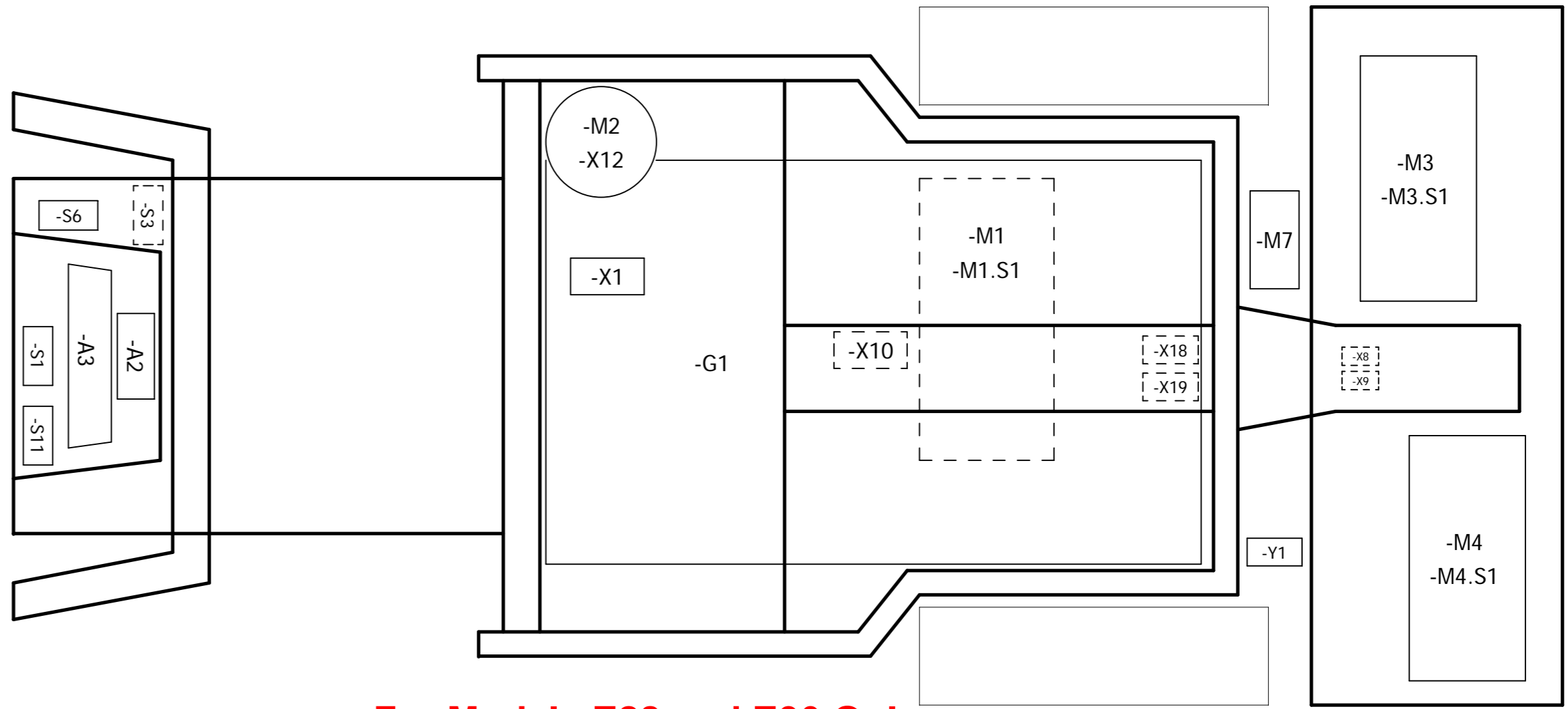
**For Models E28 and E30 Only**

A3	2	1174-00	1x	19.12.07	Ri.	2007	date	name	indemnity for: GI.Nr.	 Hako-Werke GmbH D-23840 Bad Oldesloe	circuit diagram	E2833	91026567	page 2 3 pa.
	no	modified no.	no. available	date	name	drawn by	07.06.	kupe						

### machine with conical brush

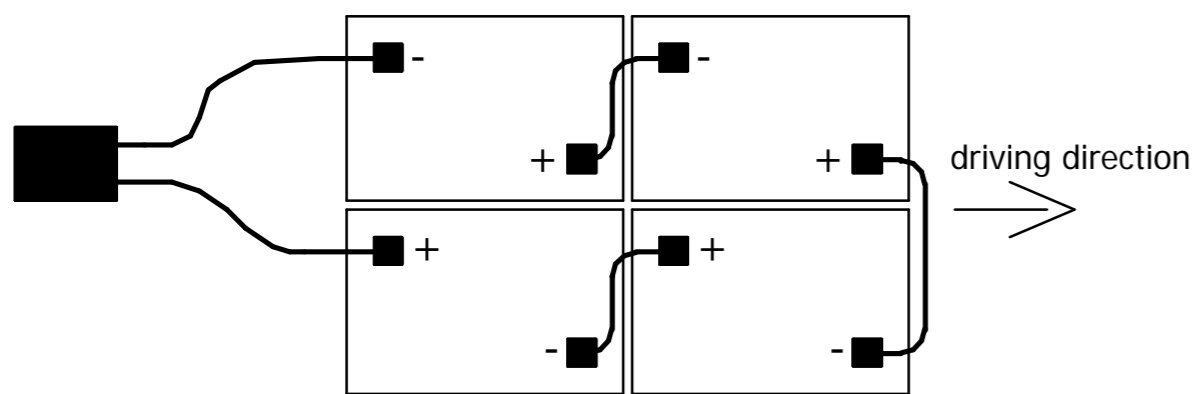


### machine with cylindrical brush



**For Models E28 and E30 Only**


top view of battery block



2

PLOTDATUM : 19.12.2007 B-Stand 003 / Ri. / 19.12.07 004 / kupe / 19.12.07

A2

=	2	1x	1174-00	19.12.07	Ri.	2007	Datum	Name	VES-Nr. :	Benennung		 Hako-Werke GmbH D-23840 Bad Oldesloe	Zeichnungs-Nr.			
	+	Nr.	Zahl kommt vor	Änd.-Nr.	Datum	Name	Normgepr.	Gezeichnet	07.06.	kupe	Ersatz für:		GI.Nr.	91026567		
										Änd. Nr. :	1066-00	Für diese Zeichnung behalten wir uns alle Rechte vor. (Gemaß DIN 34)		Typ: 7062-12/15/18	Blattzahl: 3	Blatt: 3